

## #PROJECT

---

JOSÉ CASTRO CALDAS  
29 APRIL 1981  
PORTUGUESE  
PORTUGAL

MASTERS IN ARCHITECTURE IN UAL 2007

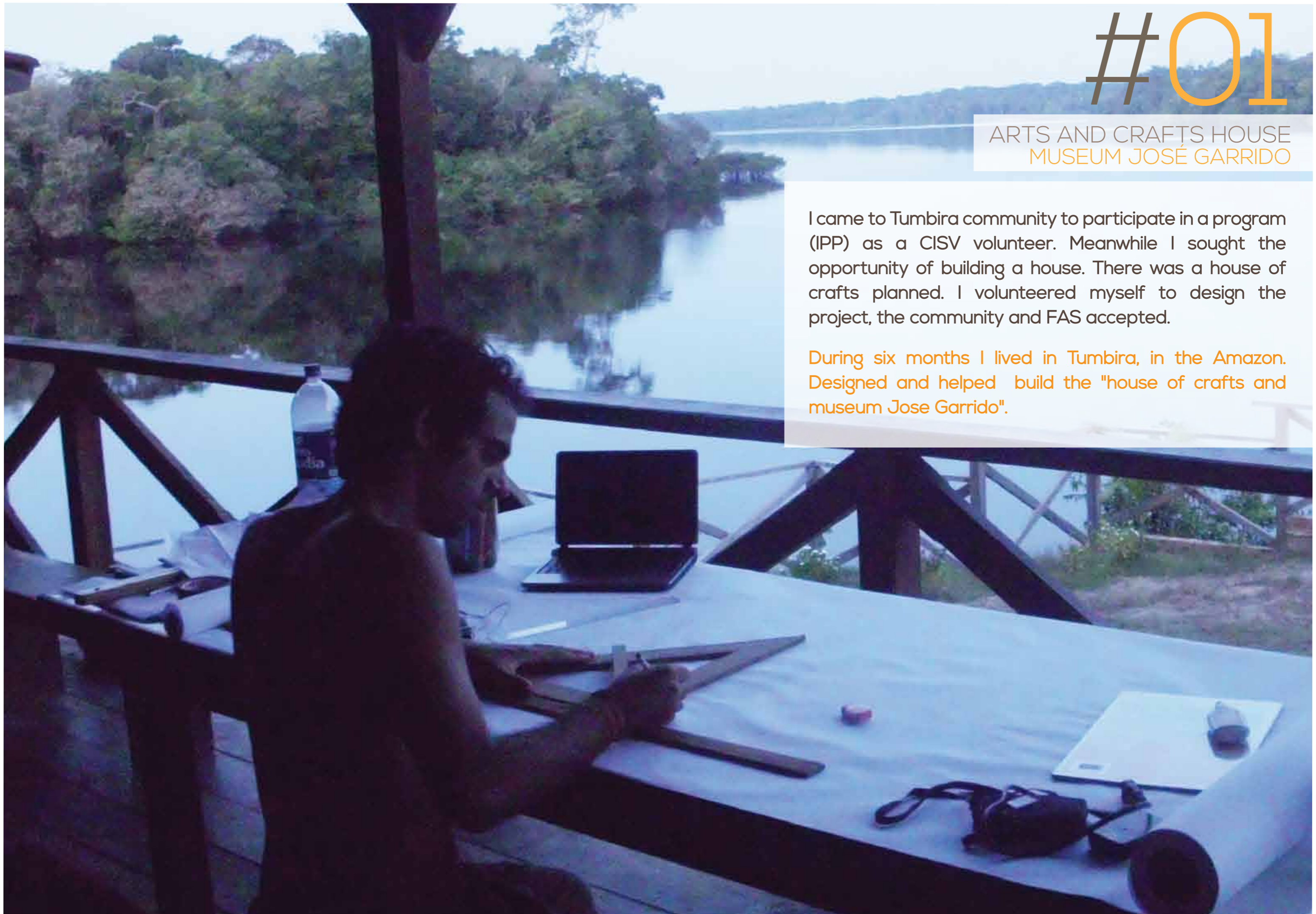
ARTS AND CRAFTS HOUSE  
JOSÉ GARRIDO MUSEUM

# #01

## ARTS AND CRAFTS HOUSE MUSEUM JOSÉ GARRIDO

I came to Tumbira community to participate in a program (IPP) as a CISV volunteer. Meanwhile I sought the opportunity of building a house. There was a house of crafts planned. I volunteered myself to design the project, the community and FAS accepted.

During six months I lived in Tumbira, in the Amazon. Designed and helped build the "house of crafts and museum Jose Garrido".





**There was an effort that:**

All materials and people involved in its implementation were from the community. It was very important that everyone felt as part of the process in what was to be a building for community use - For everyone made by everyone.

With a past of shipbuilding in the community, I knew I could count on experienced and very talented carpenters. To run as for the sharing of technical solutions and fusion of the two, not so distant areas of construction. There were also people who are very skilled in upholstery. Included as part of architectural design - A arts and crafts house where the craft is part of the construction - and created a very interesting phenomenon of sharing and teaching the art "Tupe", which will be in the future it's purpose.

Finally, the importance of maintaining traditional images and materials, to preserve local culture, readjusting into a contemporary design.

\*  
CONSTRUCTION  
TEAM



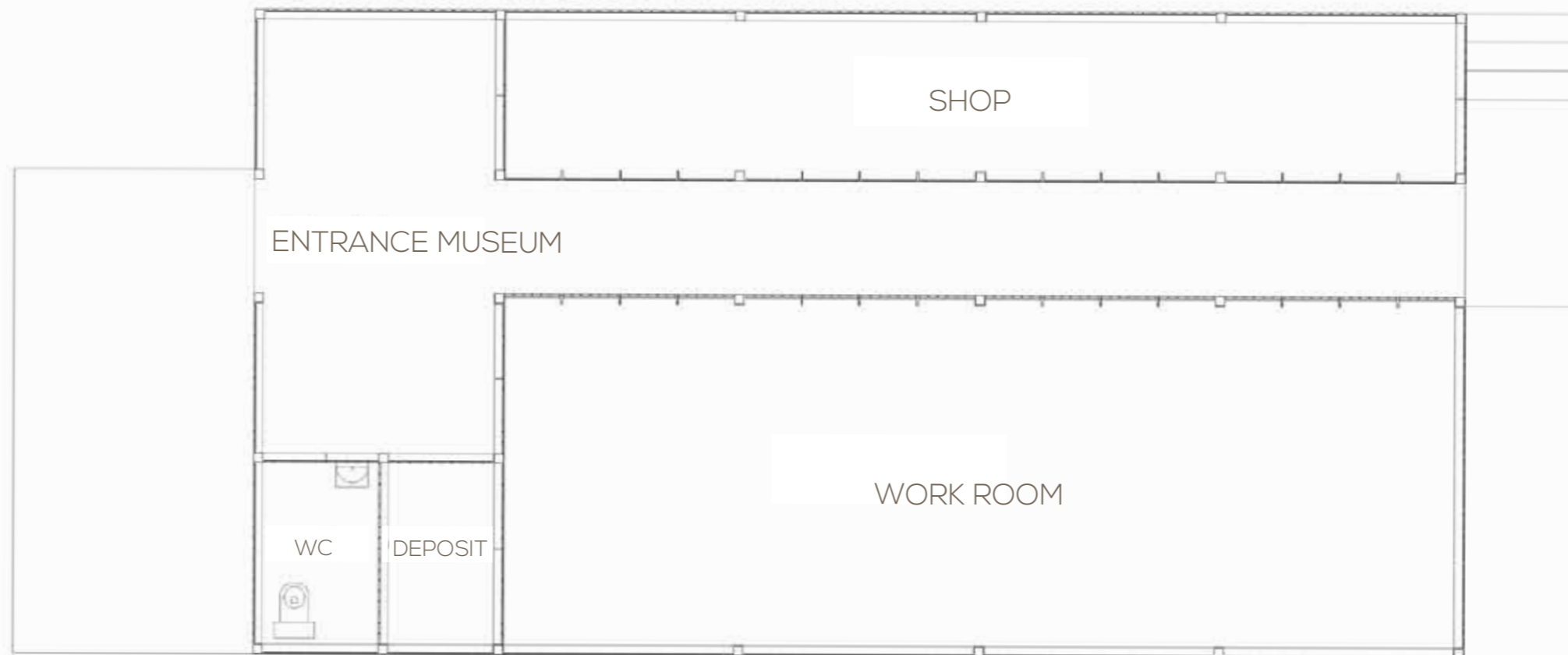
\*  
JOSÉ GARRIDO

# #01

ARTS AND CRAFTS HOUSE  
MUSEUM JOSÉ GARRIDO

The museum is a way to honor Jose Garrido. A ship-builder, founder of the community and for many years professor of employer and majority of the inhabitants. A figure of undeniable importance in the reserve and one of the most incredible people I met.

#01



# #PROJECT

From the postmodernism in architecture, there is - among others - the concept of design integration (and program) in the specific circumstances of the site. An analysis of all factors that should result in a single work of architecture, because there are no sets of situations exactly alike. In this example, and (in a even more) complexity due to the specificity of this site - the Amazon, it was evident as a factor to consider in the architectural approach.

It was important to consider that being part of a financial program to support the community, therefore it would make sense that it would be done by, and using local materials. Thus, investment (like construction) remain within the community!

A simple plan, a rectangle of 8m x 15m, divided into three programs:

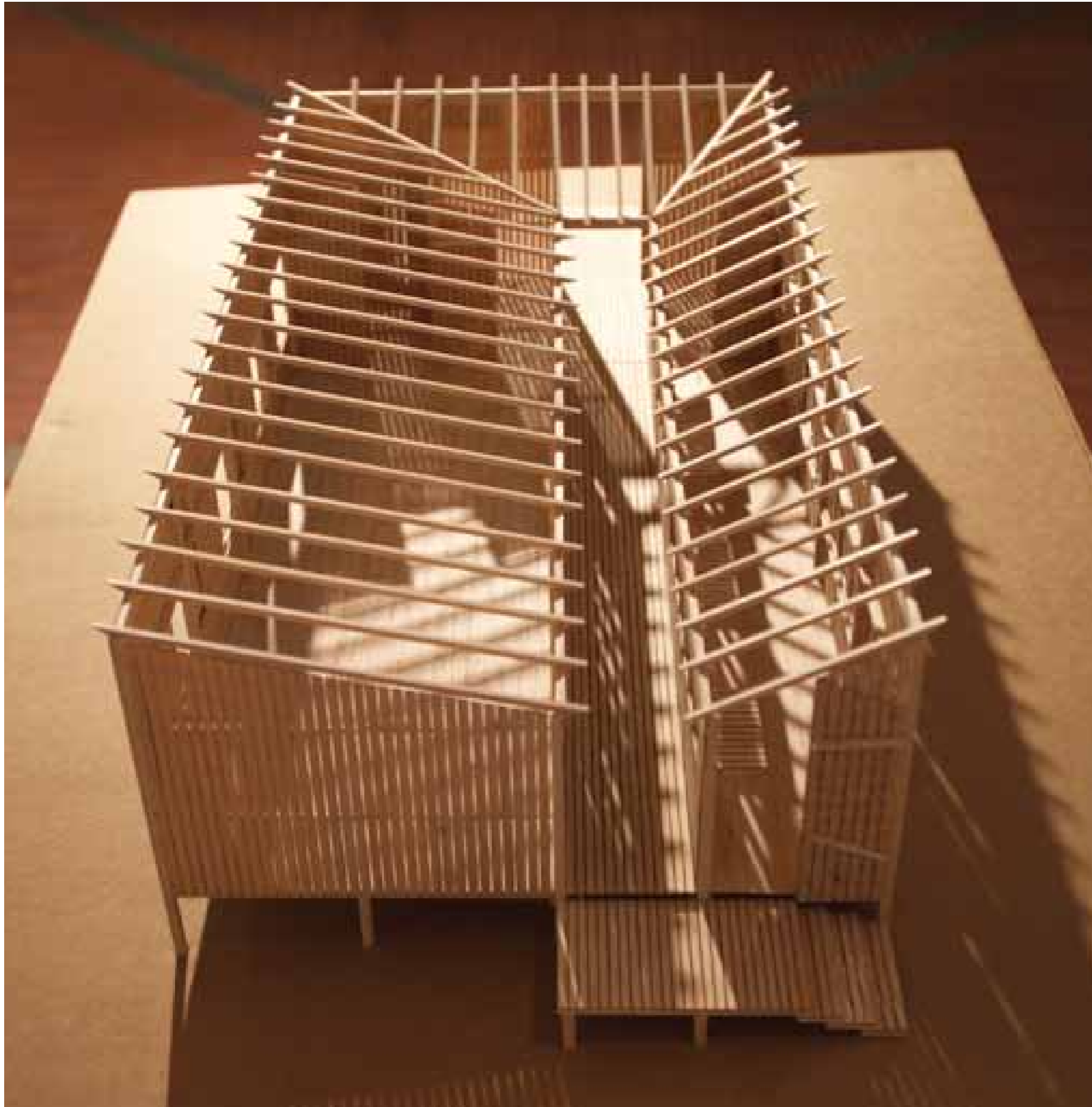
- WORKPLACE;
- STORE;
- MUSEUM;

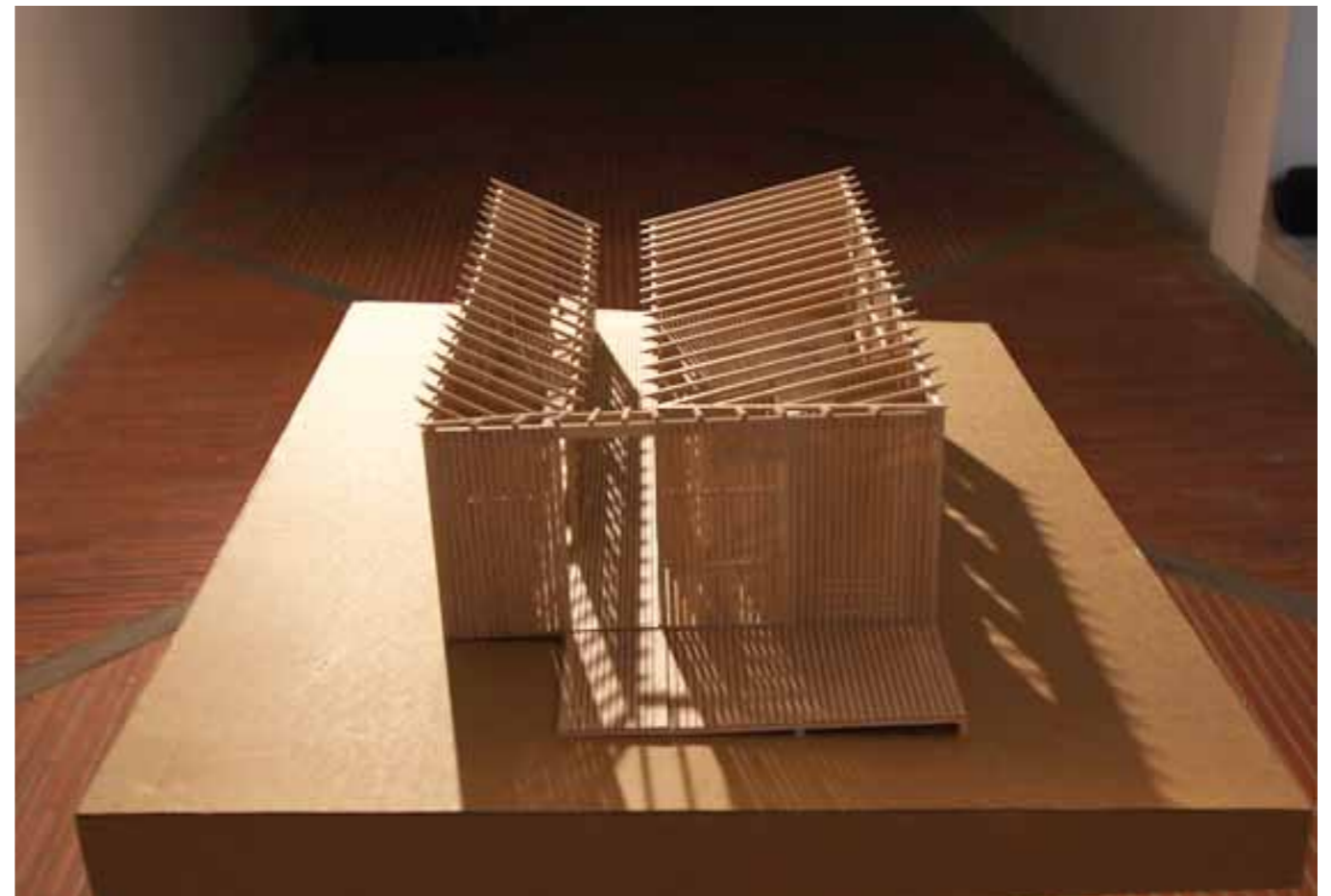
A corridor perpendicular to more incisive wind direction, splitting (not symmetrically) to store and work area. Allows greater air circulation, and therefore a constant supply of fresh air, that due to it's cover gender compluvium system projects the hot air through the top of the façades. As a complement, the straw in the cover, as well as a material characteristic of this zone, is an excellent thermal insulator.

The corridor also provides a more light penetration.

The museum on Jose Garrido - the founder of the community. Enhancement of a local reference, unanimously respected by all.

#MODEL  
ARTS AND CRAFTS HOUSE  
MUSEUM JOSÉ GARRIDO



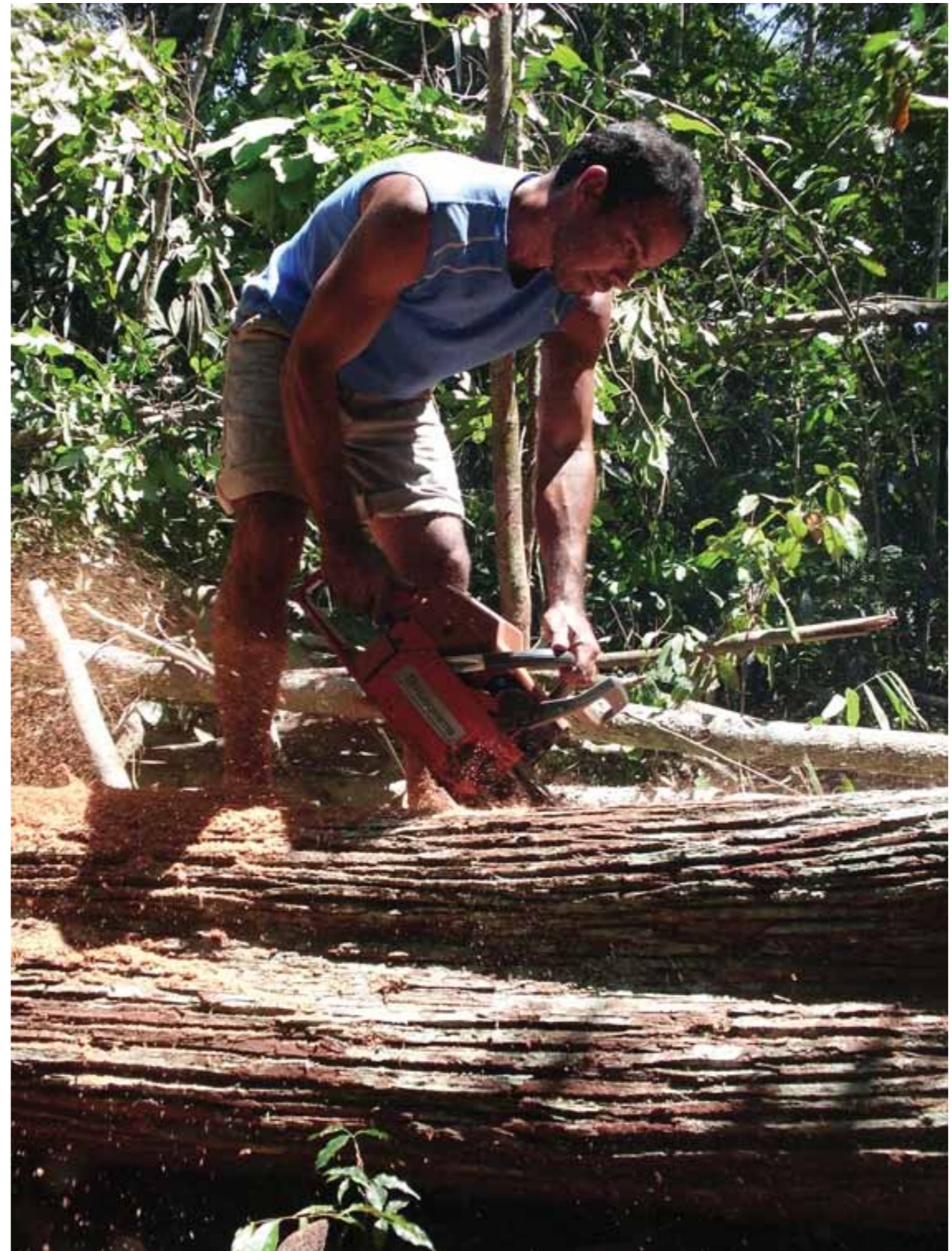




#02

# #CONSTRUCTION

ARTS AND CRAFTS HOUSE  
MUSEUM JOSÉ GARRIDO



# #CONSTRUCTION

ARTS AND CRAFTS HOUSE  
MUSEUM JOSÉ GARRIDO



# #CONSTRUCTION

ARTS AND CRAFTS HOUSE  
MUSEUM JOSÉ GARRIDO



# #CONSTRUCTION

ARTS AND CRAFTS HOUSE  
MUSEUM JOSÉ GARRIDO



# #CONSTRUCTION

ARTS AND CRAFTS HOUSE  
MUSEUM JOSÉ GARRIDO



# #CONSTRUCTION

ARTS AND CRAFTS HOUSE  
MUSEUM JOSÉ GARRIDO



# #CONSTRUCTION

ARTS AND CRAFTS HOUSE  
MUSEUM JOSÉ GARRIDO



# #CONSTRUCTION

ARTS AND CRAFTS HOUSE  
MUSEUM JOSÉ GARRIDO



# #CONSTRUCTION

ARTS AND CRAFTS HOUSE  
MUSEUM JOSÉ GARRIDO



# #CONSTRUCTION

ARTS AND CRAFTS HOUSE  
MUSEUM JOSÉ GARRIDO



# #CONSTRUCTION

ARTS AND CRAFTS HOUSE  
MUSEUM JOSÉ GARRIDO



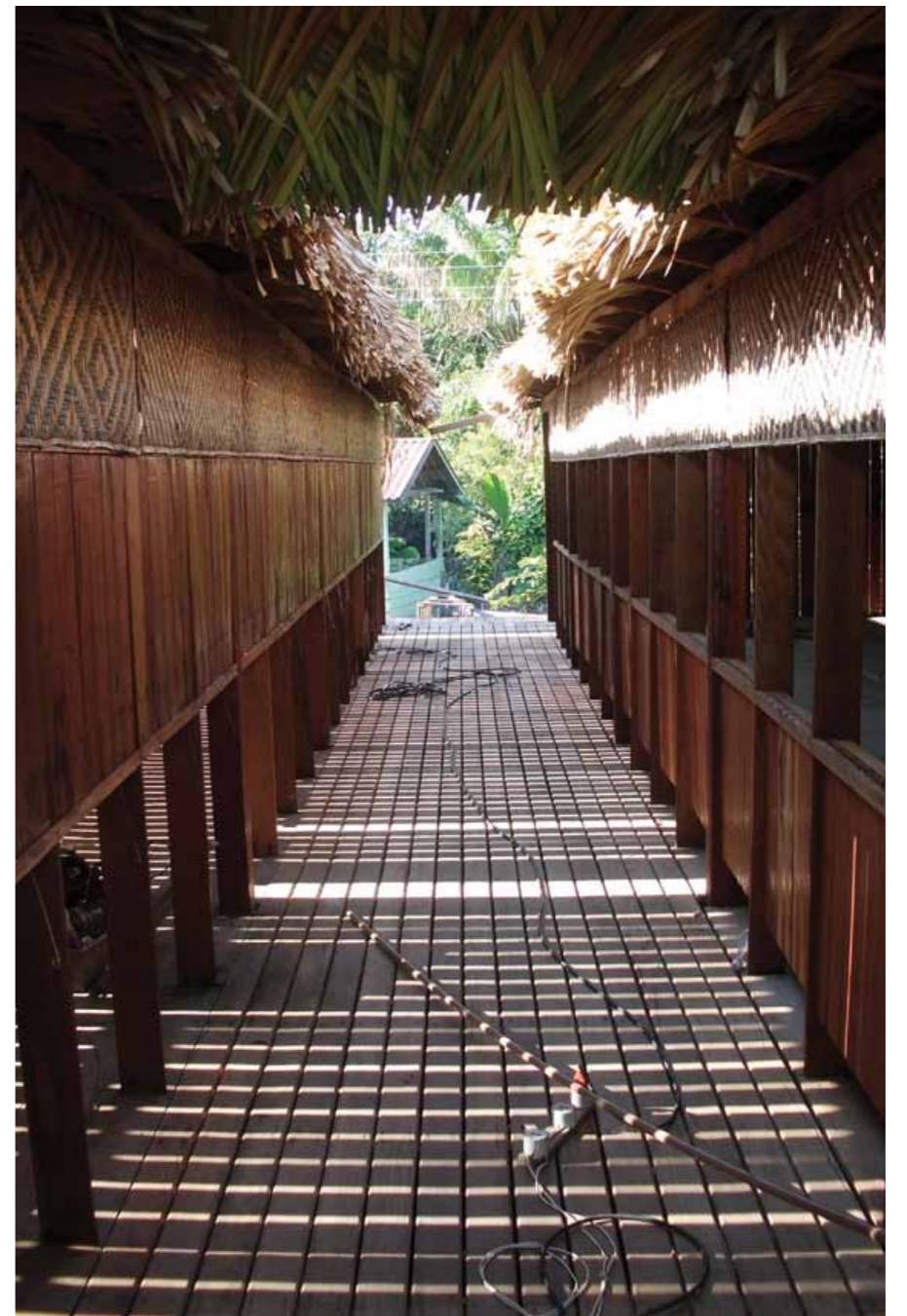
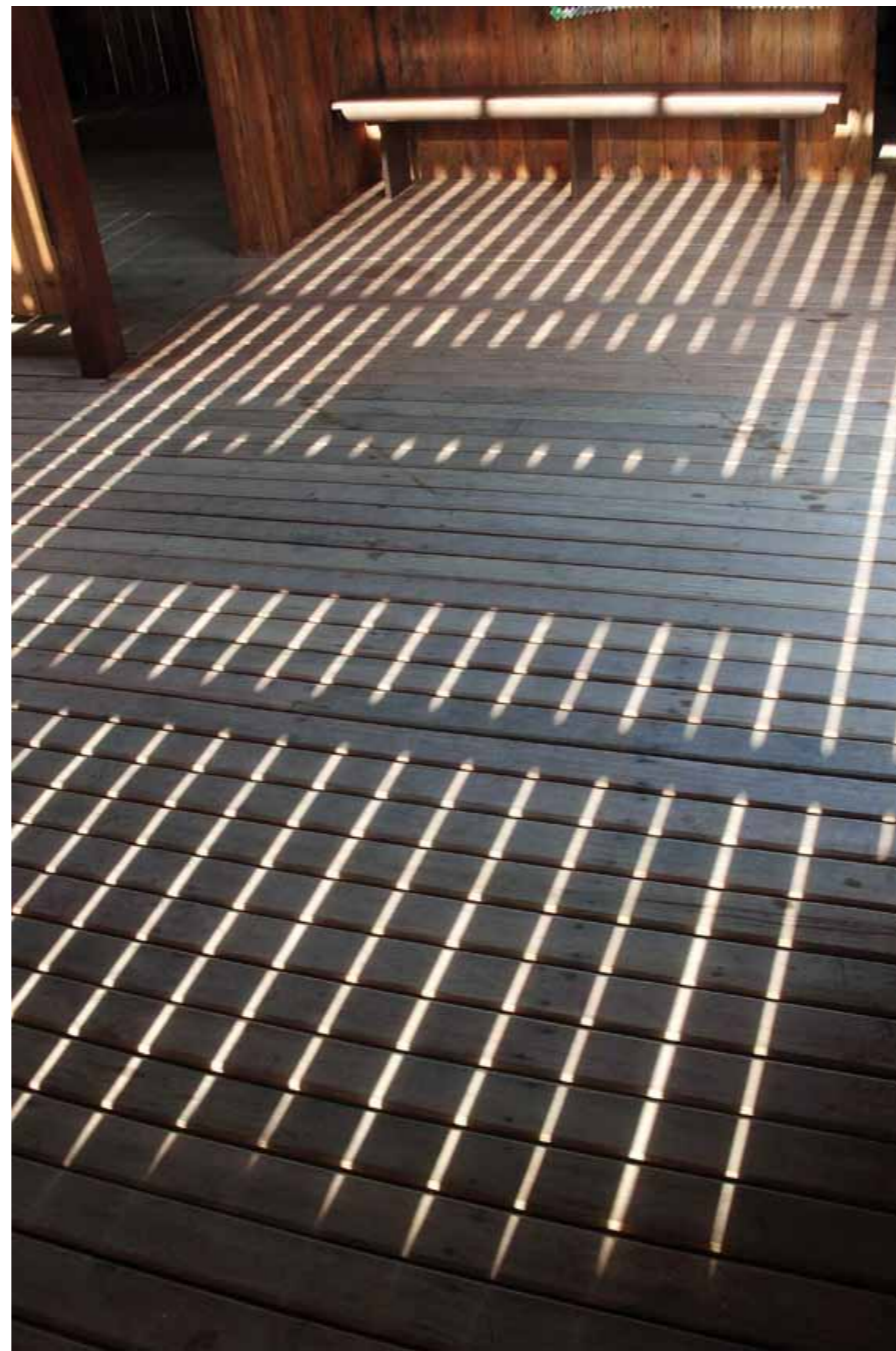
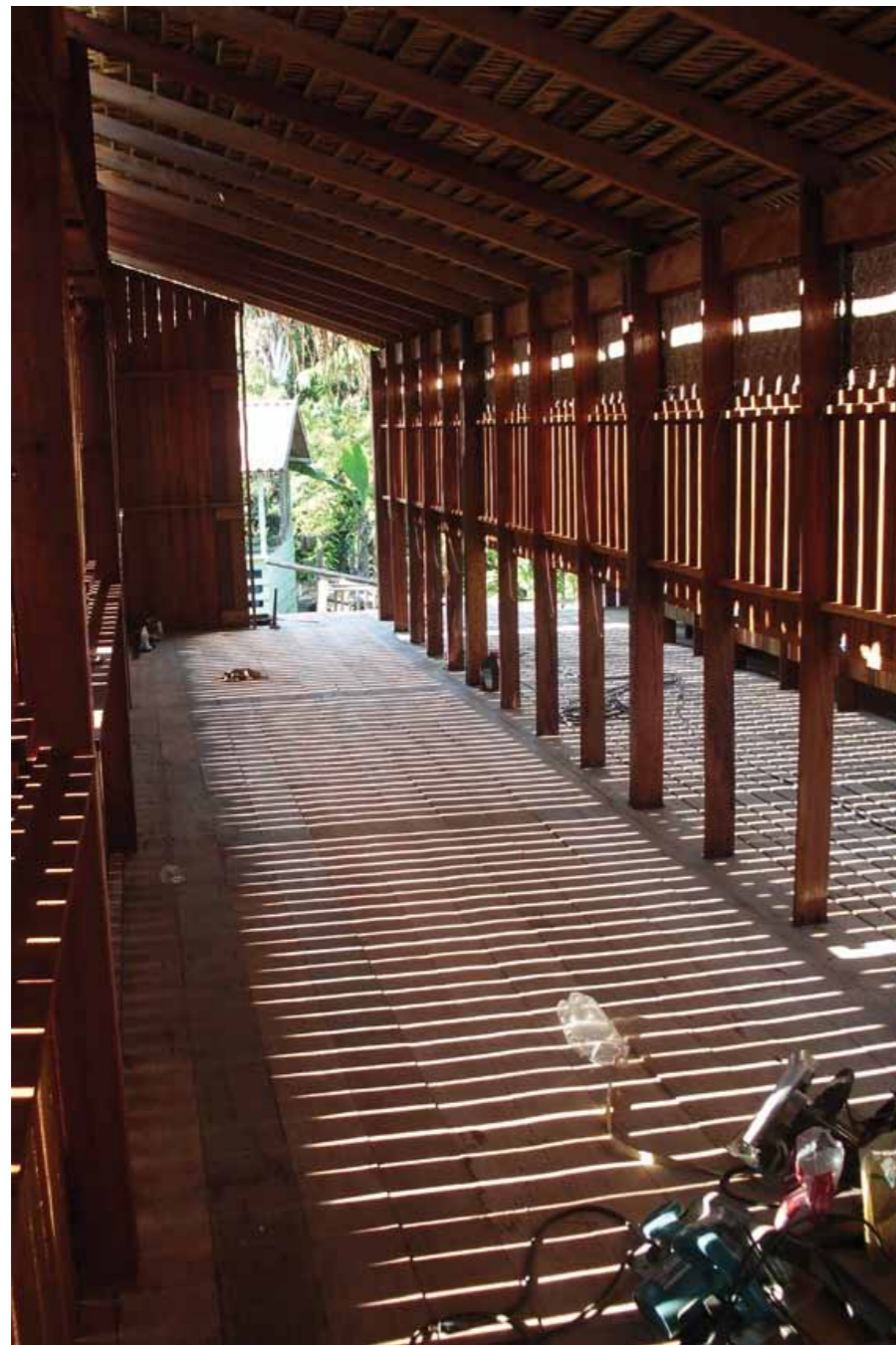
# #CONSTRUCTION

ARTS AND CRAFTS HOUSE  
MUSEUM JOSÉ GARRIDO



# #CONSTRUCTION

ARTS AND CRAFTS HOUSE  
MUSEUM JOSÉ GARRIDO



# #CONSTRUCTION

ARTS AND CRAFTS HOUSE  
MUSEUM JOSÉ GARRIDO



#03

# #CONCLUSION

ARTS AND CRAFTS HOUSE  
MUSEUM JOSÉ GARRIDO



# #CONCLUSION

ARTS AND CRAFTS HOUSE  
MUSEUM JOSÉ GARRIDO



# #CONCLUSION

ARTS AND CRAFTS HOUSE  
MUSEUM JOSÉ GARRIDO



# #CONCLUSION

ARTS AND CRAFTS HOUSE  
MUSEUM JOSÉ GARRIDO



# #CONCLUSION

ARTS AND CRAFTS HOUSE  
MUSEUM JOSÉ GARRIDO



# #CONCLUSION

ARTS AND CRAFTS HOUSE  
MUSEUM JOSÉ GARRIDO





CASA DE  
ARTESANATO  
MUSEO DE LA  
SIERRA DE ALBA

ARTS AND CRAFTS HOUSE  
JOSÉ GARRIDO MUSEUM  
TUMBIRA/AMAZONIA  
JUNE-DECEMBER 2011